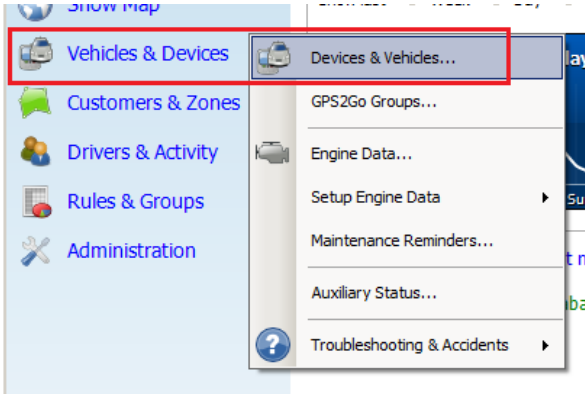
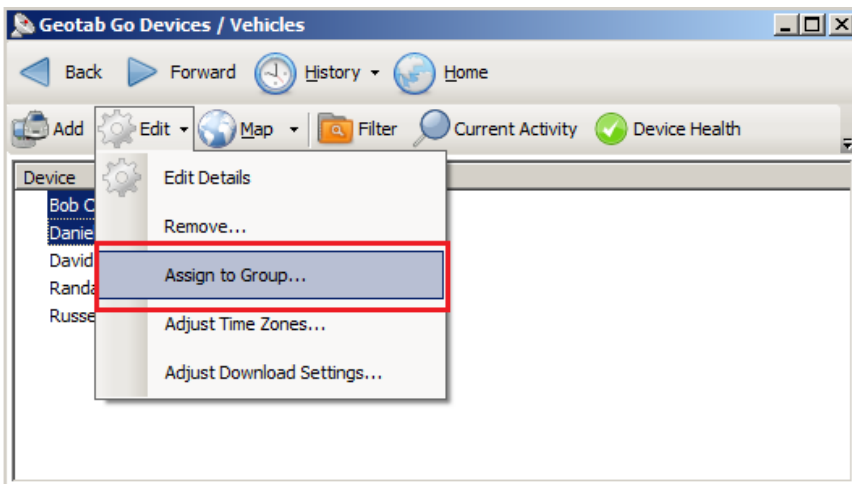


Assigning Devices to Groups

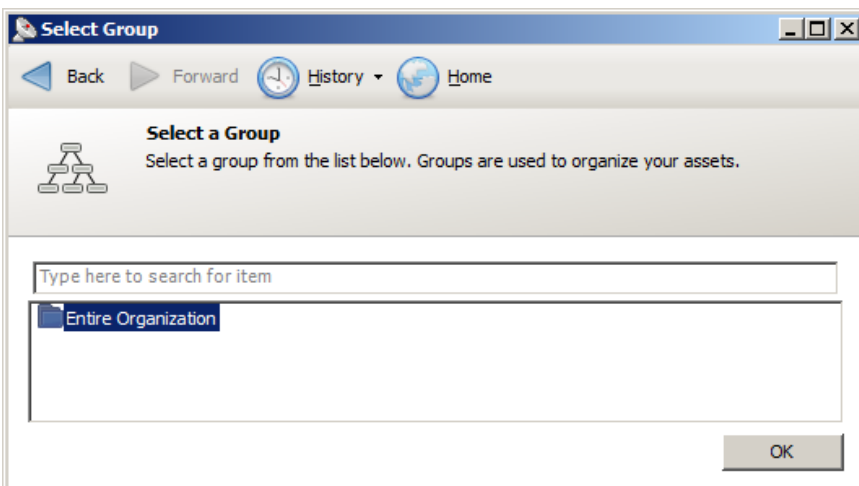
- 1) To add a device to a specific Group, select **Vehicles and Devices** then **Devices and Vehicles**



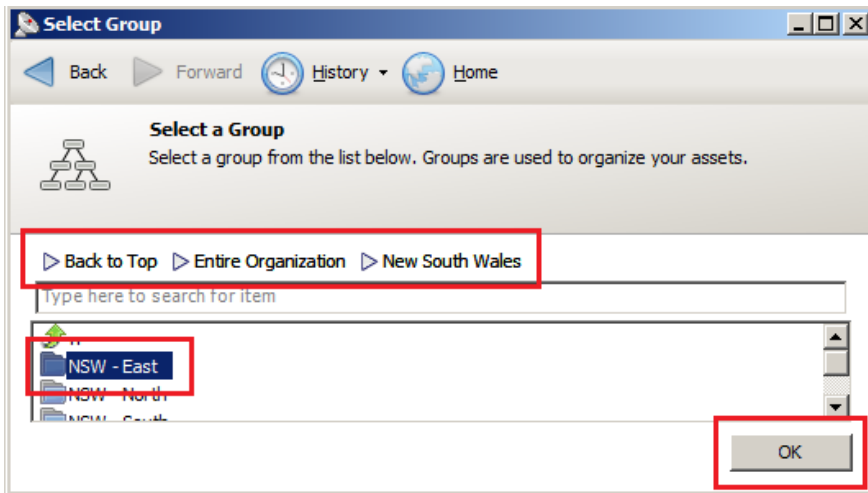
- 2) From the following screen, select the **Device** to be assigned to a **Group** (select multiple devices by holding down the CTRL key while selecting Devices) then select **Edit** and **Assign to Group**.



- 3) From the following screen, double click on **Entire organisation**.



4) Then navigate to the Group or sub Group you would like to assign the device to and select **OK**.



5) You will then see the Device list with columns added; now showing the Group that the device is a member.

