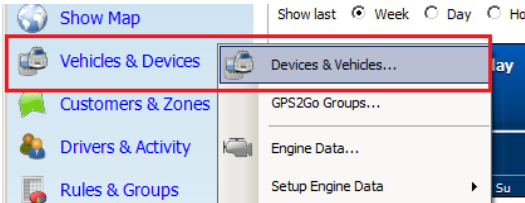
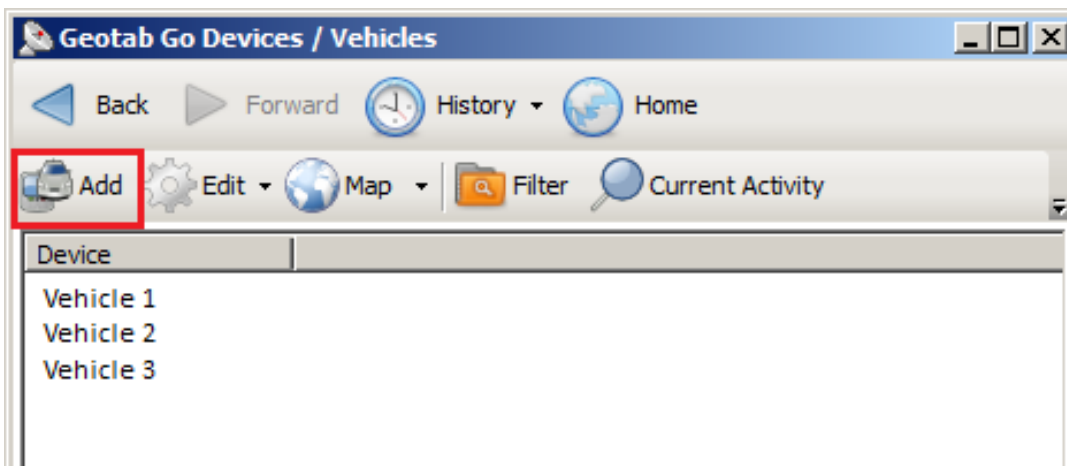


## Checkmate - Adding a GO Device

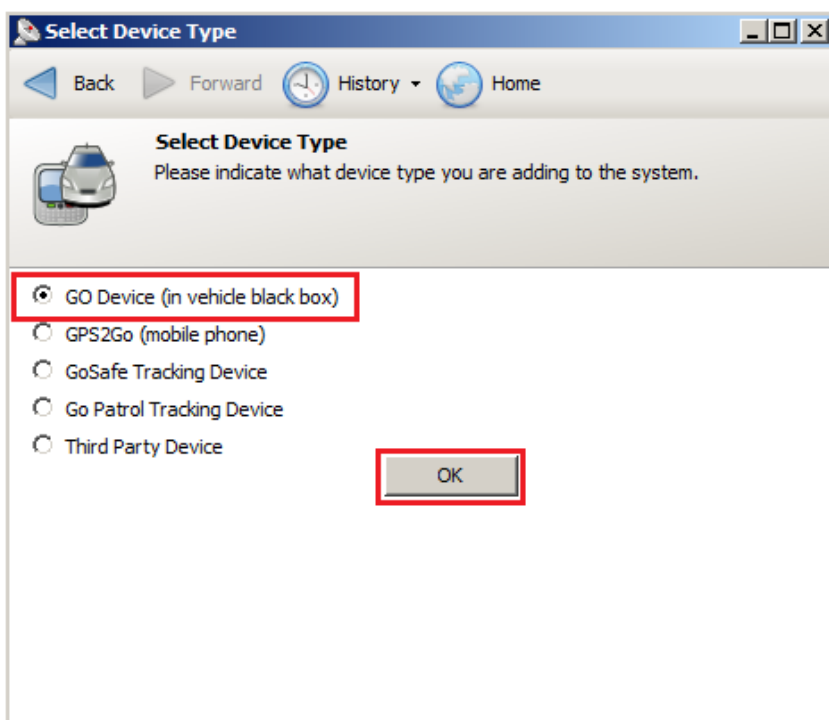
- 1) From the Home Screen click on **Vehicles and Devices** and then select **Devices and Vehicles**.



- 2) From the following screen, click on **Add**



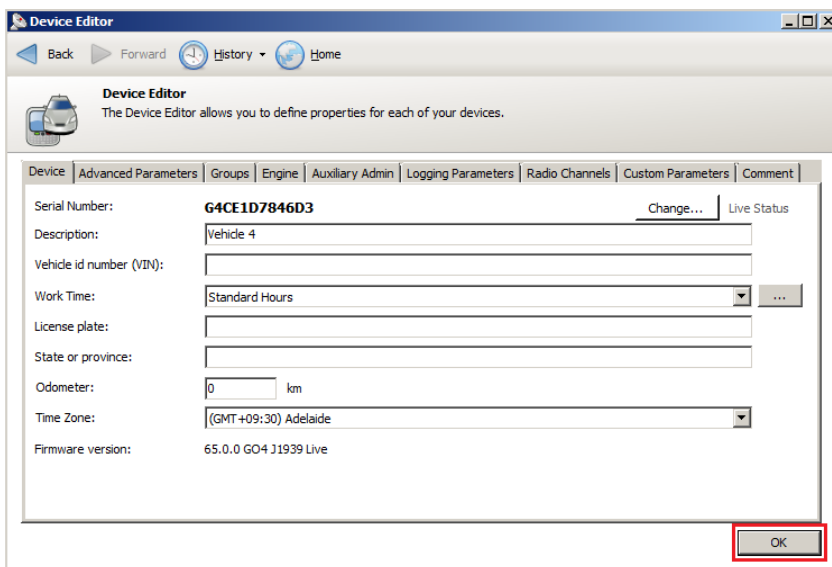
- 3) Select the Device Type you would like to Add then click **OK**. *For this exercise we will be adding a GO RF or GO Live unit.*



- 4) You will then be prompted to add the Serial number for the device. Add the serial number of the device and click on **OK**. If you do not enter a valid serial number the OK button will not be active.



- 5) You will then see the Device Editor screen, complete as much detail as you require and assign the device to a Group (see documentation *Creating Device Groups*) then click OK.



- 6) You have now successfully added the Device to your Checkmate Software application. You can continue to add additional Devices by clicking the Add icon and repeat steps 3 to 5.

