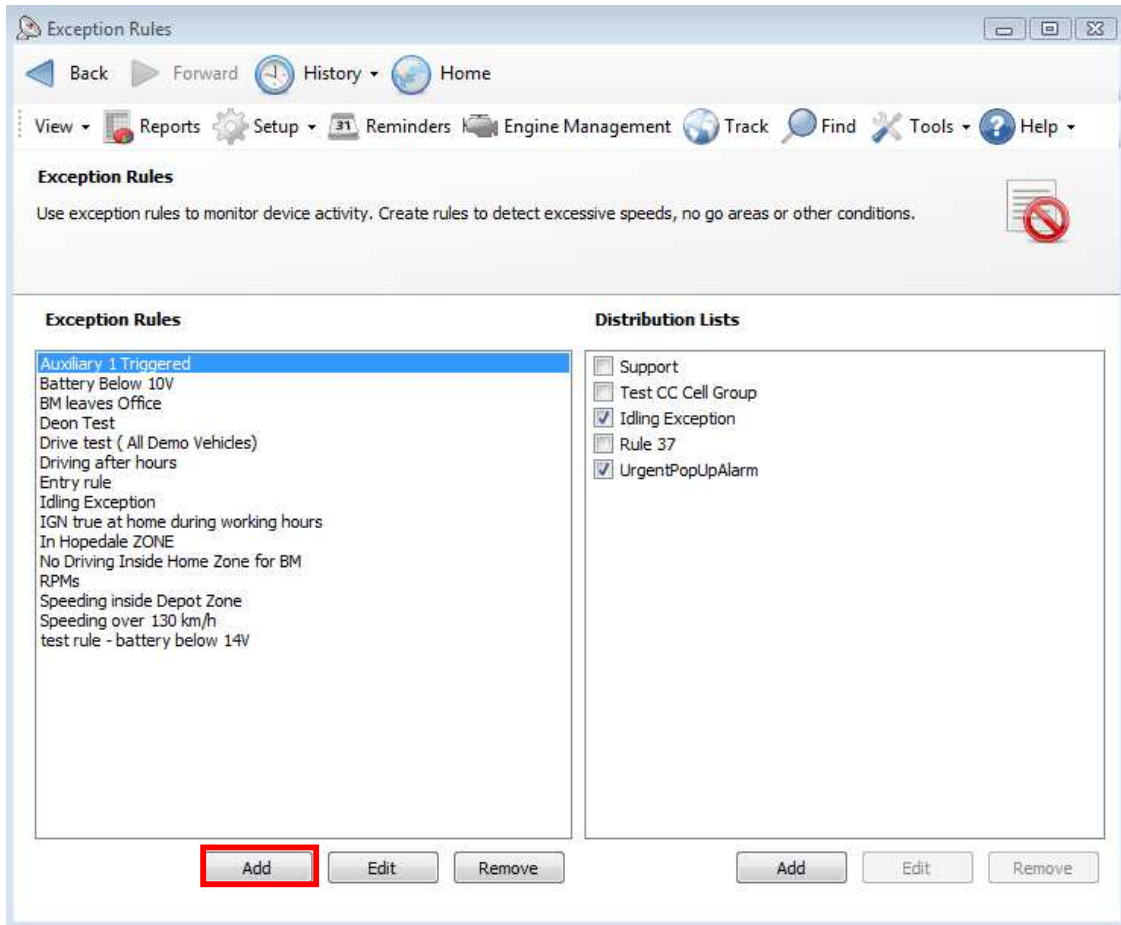


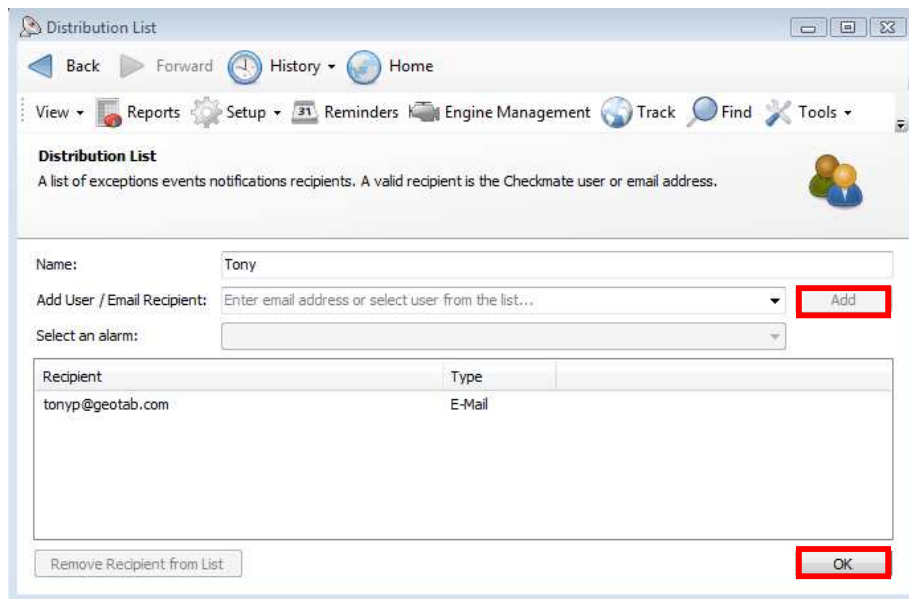
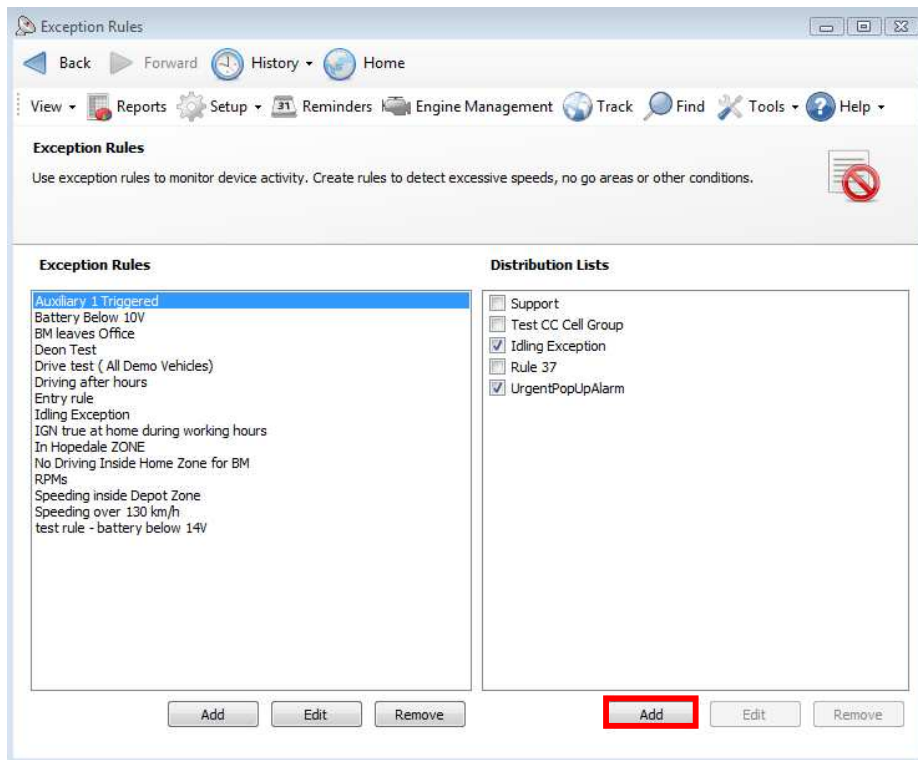
Checkmate notifications are a powerful new tool which allows managers to quickly respond to vehicle activity while the driver is still in the field. Notifications can be generated for speeding, entry into a forbidden area, excessive idling, seatbelt violations, and many others. This guide presents a brief tutorial on how to create an exceptions rule, setup a notification distribution list, and configuring Checkmate to notify the members of a distribution list whenever an exception rule is violated.

To create an exception rule, open Checkmate and select Setup→Exceptions, and click Add as shown below:



You have the option to create an Exception Rule similar to the ones used in previous versions of Checkmate, or create an Engine Exception Rule. Engine Exception rules allow you to specify a threshold range for specific engine data such as battery voltage. When a measurement falls outside of this range, an exception violation occurs.

Once you have created all the exception rules you wish to add, the next step is to create a distribution list. From the main Checkmate window, select Setup→Exception Rules, and click Add. You can then enter the name of the distribution list, and add Checkmate users and email addresses to the list. Screenshots of this process are shown below.

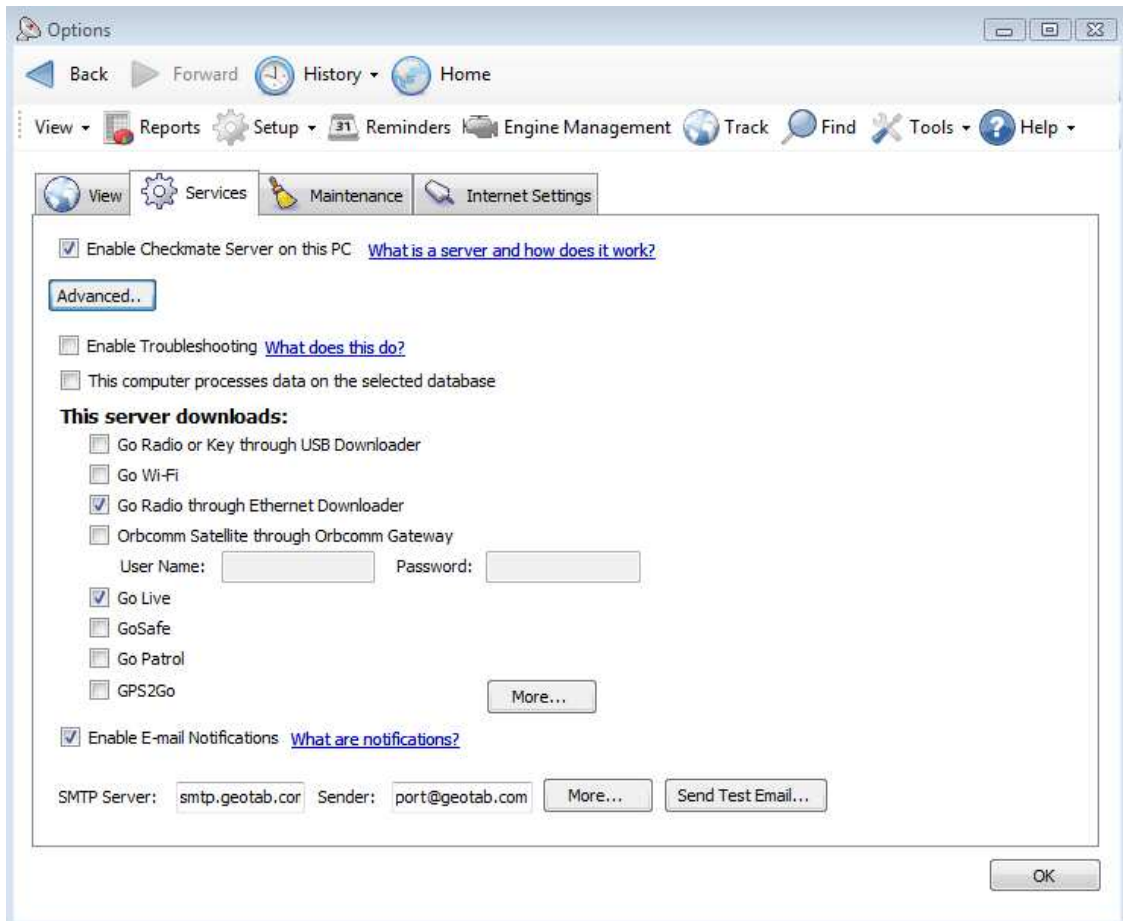


When you add an email address to the distribution list, an email is generated and sent to the provided address whenever an exception is processed by Checkmate. You can also add Checkmate users to the list, and select that they be notified in one of two ways: a pop-up on screen and an entry in the notification log, or just an entry in the log with no pop-up displayed. If you wish to receive notifications via email, you will have to setup a notification service in Checkmate. This does not have to be done on

every instance of Checkmate connected to the database, just one. It is preferable to run the notification service on a machine which is always on.

To enable this service complete the following steps:

1. From the Checkmate main window, select Setup→Options→Services, then click Enable Checkmate Server on this PC.



2. Click 'Enable E-mail Notifications' and enter your SMTP server information. You will need to enter an email address into the Sender field. This address will be the one used to email all the notifications to recipients in the distribution list.
3. Click 'More' to configure SMTP authentication
4. Click Send Test Email to check that your settings are correct. If Checkmate is able to send the email you will receive a popup indicating that your settings are correct, otherwise you will receive an error message.
5. Click OK to save your settings.

Checkmate Exception Rule Definitions:

Issue	Definition/Cause	Solution
Voltage Below 8.5 V (Brown Out Reset)	<ol style="list-style-type: none"> 1. Voltage drop below 8.5 V will trigger a Brown Out Reset 2. In some cases, it may occur only on crank and may indicate a bad connection or a weak battery. 	Consider testing this battery.
Harsh Braking	<ol style="list-style-type: none"> 1. Occurs when there is a change in speed of 17 km/h in one second, (11 mph in one second) 	Driver Behavior
Image Binary Data	<ol style="list-style-type: none"> 1. Applies to GPS2GO ONLY 2. Data Records contain a picture 	n/a
Open Circuit On Antenna	<p>The GPS circuitry has detected an open circuit on the GPS Antenna. Possible Causes:</p> <ol style="list-style-type: none"> 1. The GPS antenna has been disconnected/tampered with 2. The GPS antenna may be damaged 3. A bad connection between the GPS antenna wire and GPS pigtail (extension inside the black box) 4. A bad connection between the GPS circuitry and the GPS pigtail (extension inside the black box) 	<ol style="list-style-type: none"> 1. Determine if the GPS antenna is still disconnected. You will hear 3 long beeps a few seconds after ignition on 2. Inspect the GPS antenna for damage and check the connection described. 3. Tampering Investigation may be required. This type of error will occur if the GPS antenna is removed and reconnected.
Power On Reset	<ol style="list-style-type: none"> 1. Occurs because the unit loses power completely 2. This may indicate a bad ground connection 3. This may indicate a bad 12 V connection 4. Check fuse on 12V line(red wire) 	<ol style="list-style-type: none"> 1. Determine if the vehicle has been in for maintenance 2. Determine if the LED on the L-bracket is flashing every second to indicate power. 3. Tampering investigation may be required. This type of error will occur if the power is removed and reconnected.
Short Circuit on Antenna	<ol style="list-style-type: none"> 1. Occurs if a short occurs on the GPS antenna as a result of either damage or tampering. 2. A bad connection between the GPS antenna wire and GPS pigtail (extension inside the black box) 3. A bad connection between the GPS circuitry and the GPS pigtail (extension inside the black box) 	<ol style="list-style-type: none"> 1. Check the Antenna for Damage 2. Check the connections