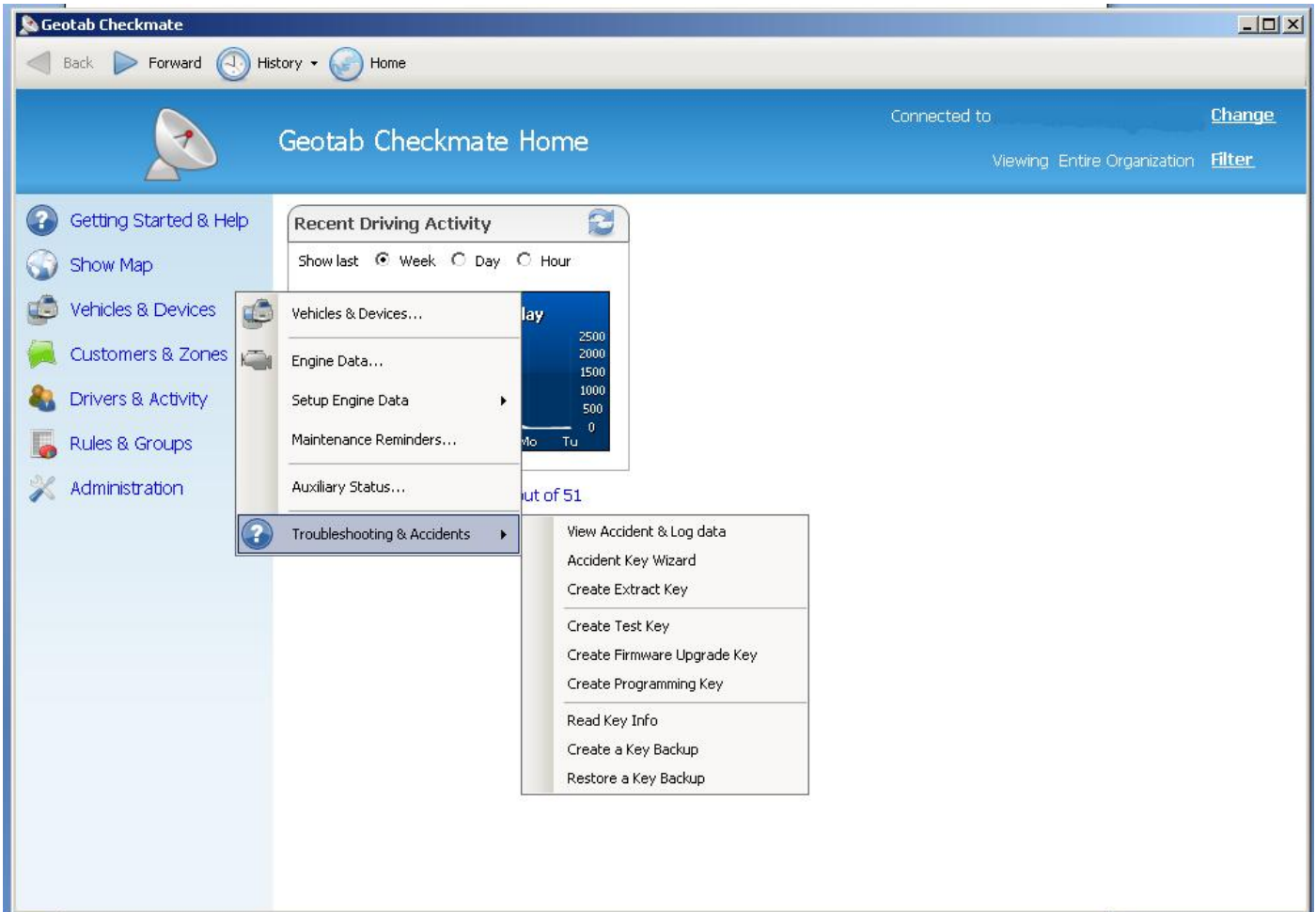


Creating a Vehicle Test Key in Checkmate

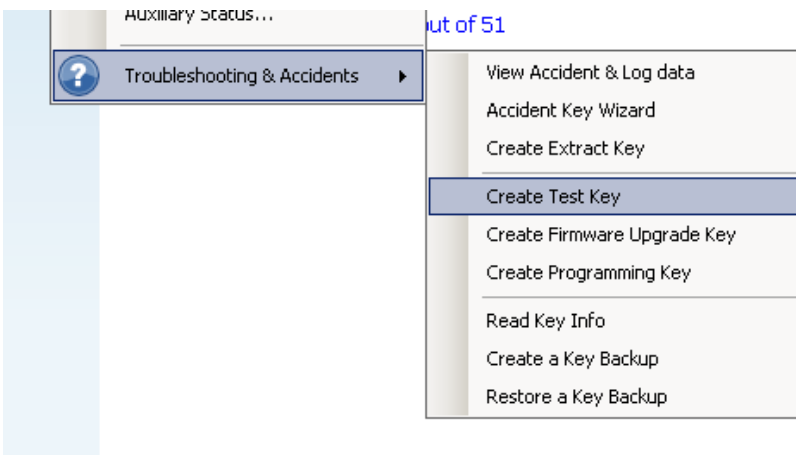
- 1) Open Checkmate

The screenshot shows the Geotab Checkmate web application interface. The browser window title is "Geotab Checkmate". The address bar shows "Back", "Forward", "History", and "Home" buttons. The main header is blue and contains a satellite icon, the text "Geotab Checkmate Home", and "Connected to" followed by a blurred IP address and a "Change" link. Below the header, there is a navigation menu on the left with icons and labels: "Getting Started & Help", "Show Map", "Vehicles & Devices", "Customers & Zones", "Drivers & Activity", "Rules & Groups", and "Administration". The main content area features a "Recent Driving Activity" widget with a refresh icon. It includes radio buttons for "Show last" (selected), "Week", "Day", and "Hour". Below this is a line graph titled "Total distance by day" with a y-axis from 0 to 2500 and an x-axis with labels "We", "Th", "Fr", "Sa", "Su", "Mo", "Tu". The graph shows a sharp drop on Wednesday, followed by a low, steady line through the rest of the week. Below the graph, it states "46 devices need downloading out of 51". In the top right corner of the main content area, it says "Viewing: Entire Organization" and "Filter".

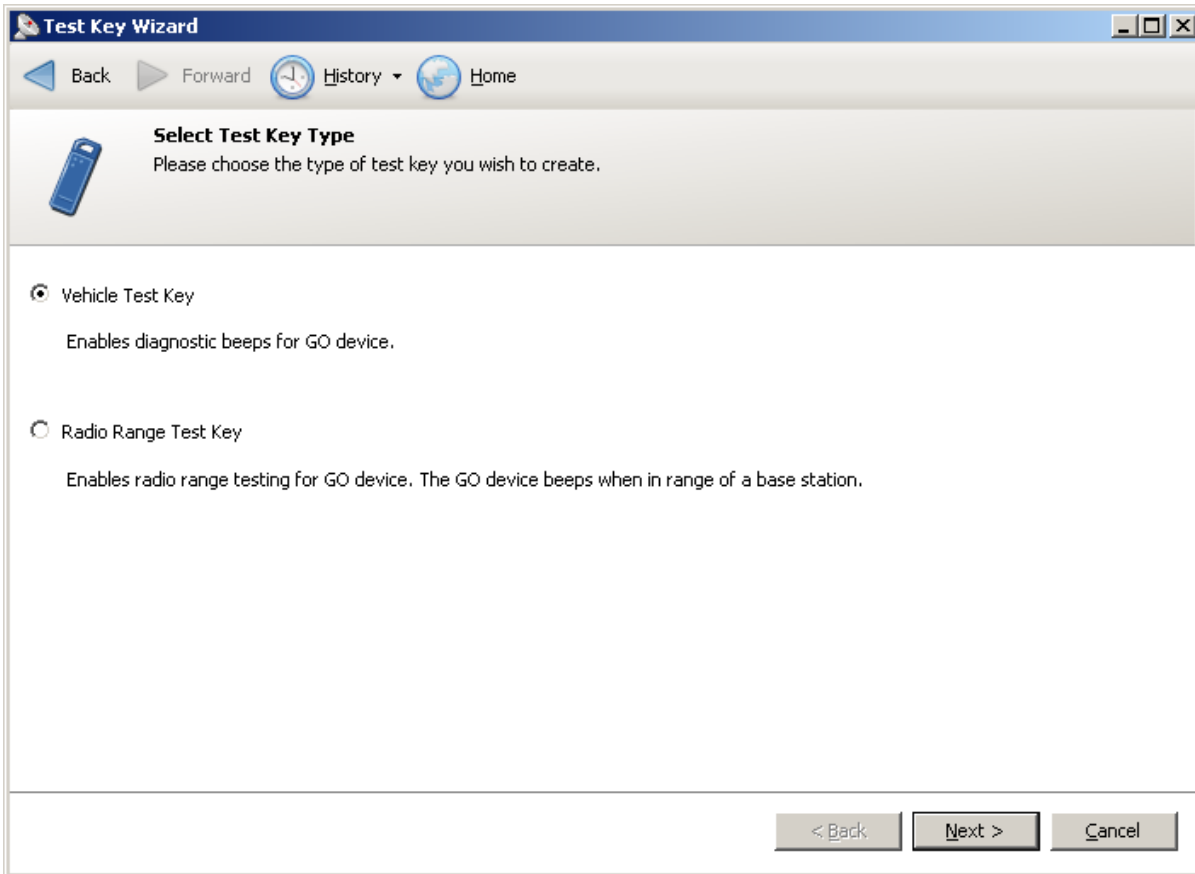
2) Click On Vehicles & Devices then Troubleshooting & Accidents



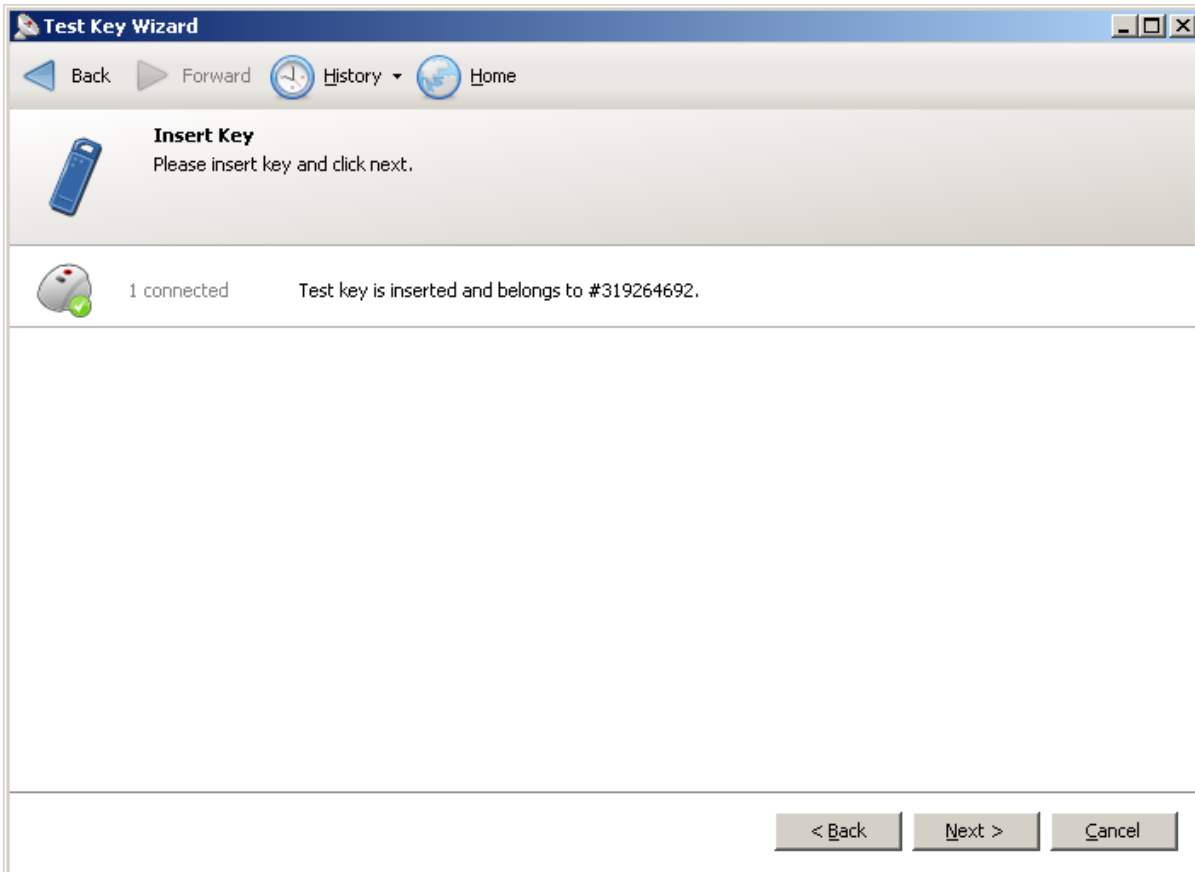
3) Click on Create Test Key



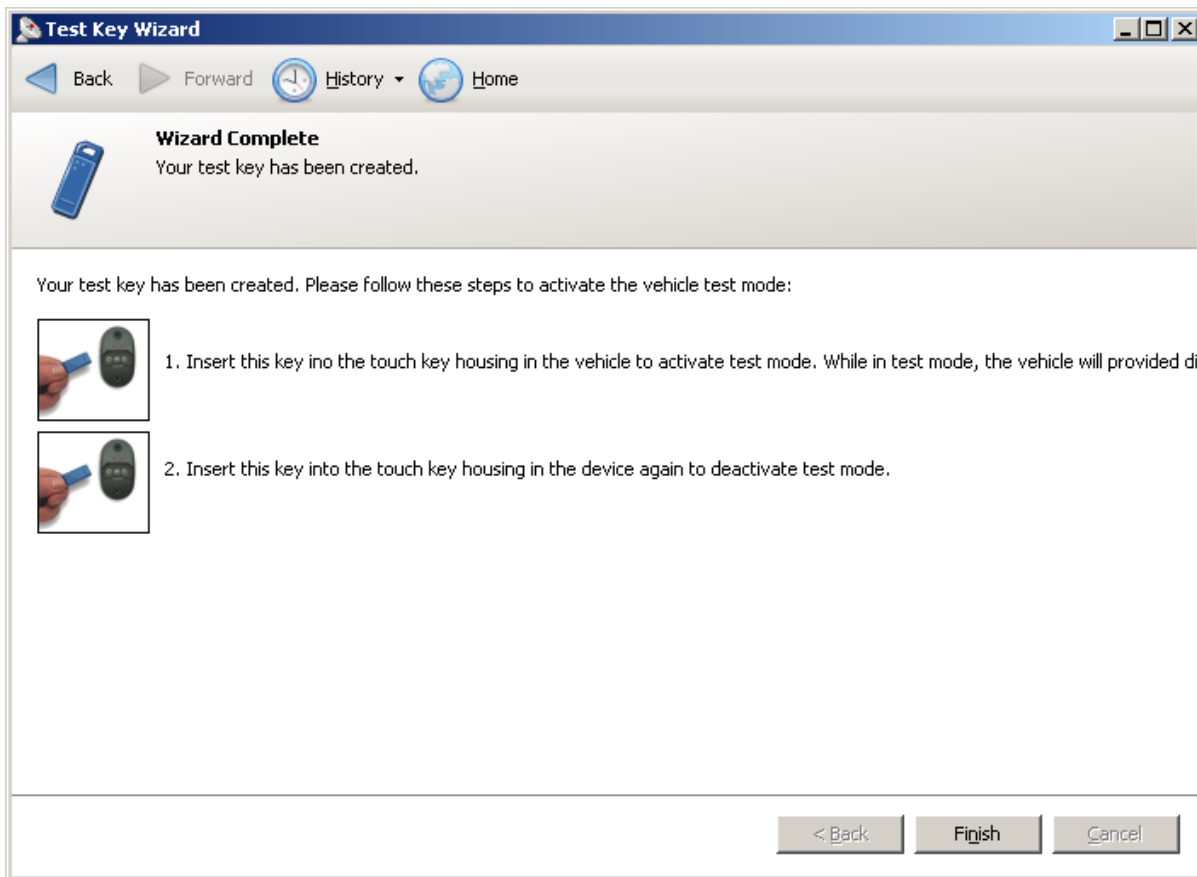
4) Select Vehicle Test Key then click Next.



5) Insert blank key then click Next



6) Key Reader will beep twice to indicate successful programming. Remove key and click Finish.



END PROCESS