

Driver Accountability and the Immobilization Feature in Checkmate

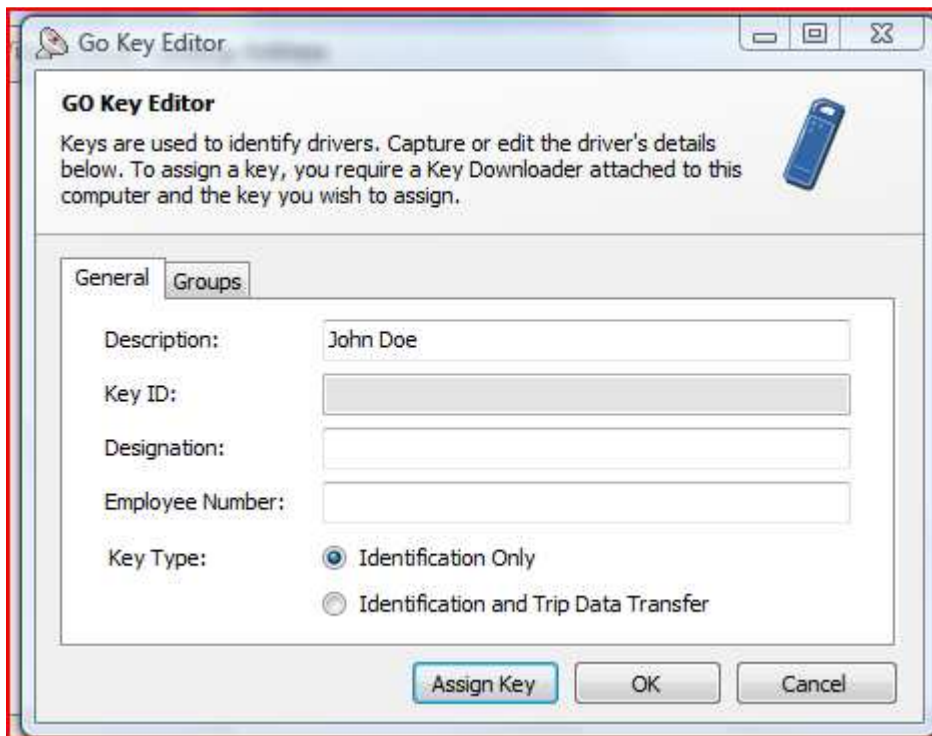
In Checkmate you have the option of generating reports by device or driver. This document details how you can use a driver identification key, the immobilization feature in Checkmate and the hardwire starter motor inhibit wiring to ensure that you correctly associate drivers with trips.

There are two possible scenarios that you have to plan for:

1. Vehicle driven by only one driver

If your vehicle is driven by only one driver then all you have to do, to assign all future trips in that vehicle to the same driver, is create a driver identification key and insert that into the unit. This needs to be done only once so the driver does not need to carry the driver Id key with him/her at all times.

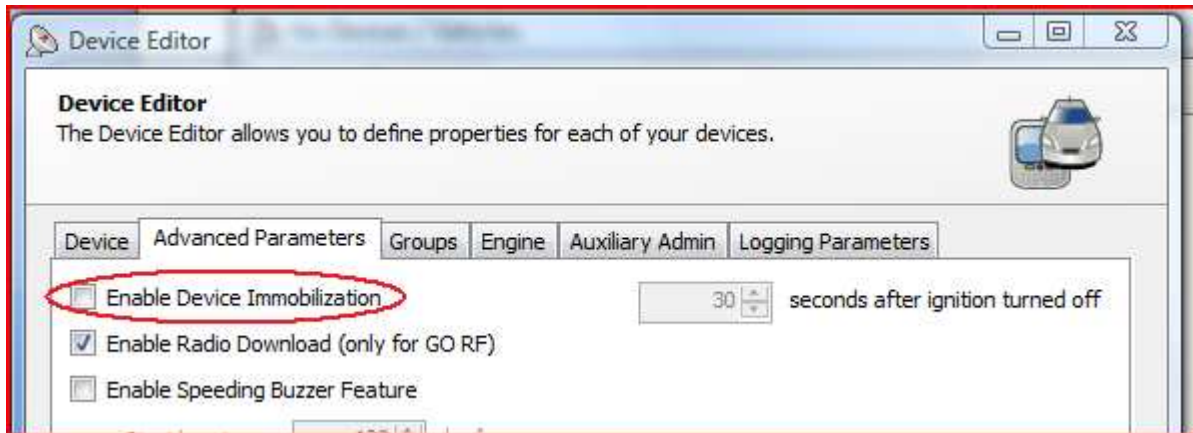
To create a driver Id key go to Setup>"Driver keys" in Checkmate and select Add from Tasks. After filling out your driver details, click on Assign Key and insert the desired key into the key reader when prompted.



2. Vehicle driven by multiple drivers

When a vehicle is driven by multiple drivers it becomes a bit more complicated as you have to ensure that the driver inserts a driver ID key before each trip so that Checkmate can assign that trip to the correct driver. If a driver does not insert his/her key, the trip will be assigned to the previous driver.

To prevent this from happening you make use of Device Immobilization. This Advanced Parameters option needs to be selected in the Device Editor for every vehicle that will be used by multiple drivers.



When this option is selected one of two things can happen.

1. If you made use of HRN-GOIMM to hardwire the immobilization feature by means of a starter inhibit relay, then the vehicle will not start until a driver key is inserted into the unit.
2. If you did not make use of the hardwire option and a driver key is not inserted before ignition is turned on, a buzzer, similar to the speeding buzzer will sound continuously and trips will be assigned to unknown driver.

Note: The hardwire immobilization feature, only available for three wire installs before, is now available for engine harness installs. SPR-ACCWIRE, an ignition detect wire (with installation instructions), is included with every unit supplied with engine harness.