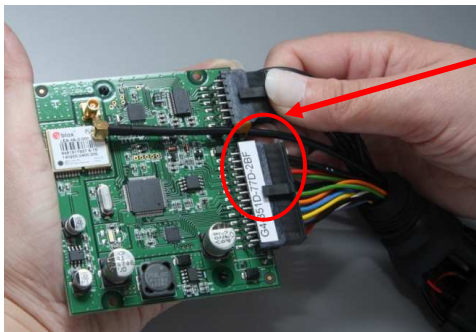
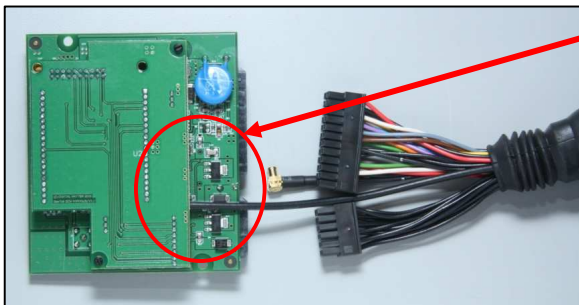




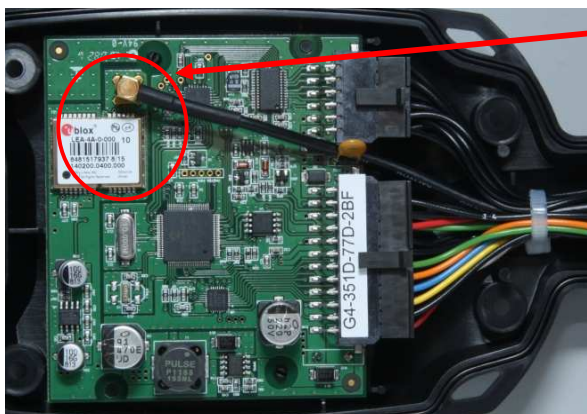
During installation/vehicle repair, the wiring harness may be pulled excessively and prevent the unit from working properly. Open GO housing to inspect internal connections. Remove the 4 Philips screws.



For Power related problems, verify that GO harness is connected securely to the main board. Ensure that all pins are locked into the black Molex.



Verify that RF board and RF pigtail are securely connected.



For GPS tests, verify that GPS pigtail is securely connected to the right angle connector and has no visual damage

