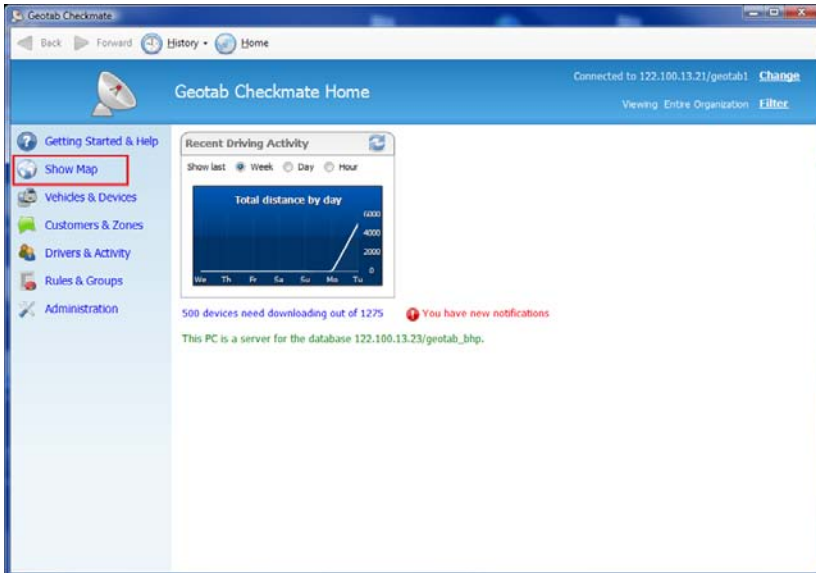
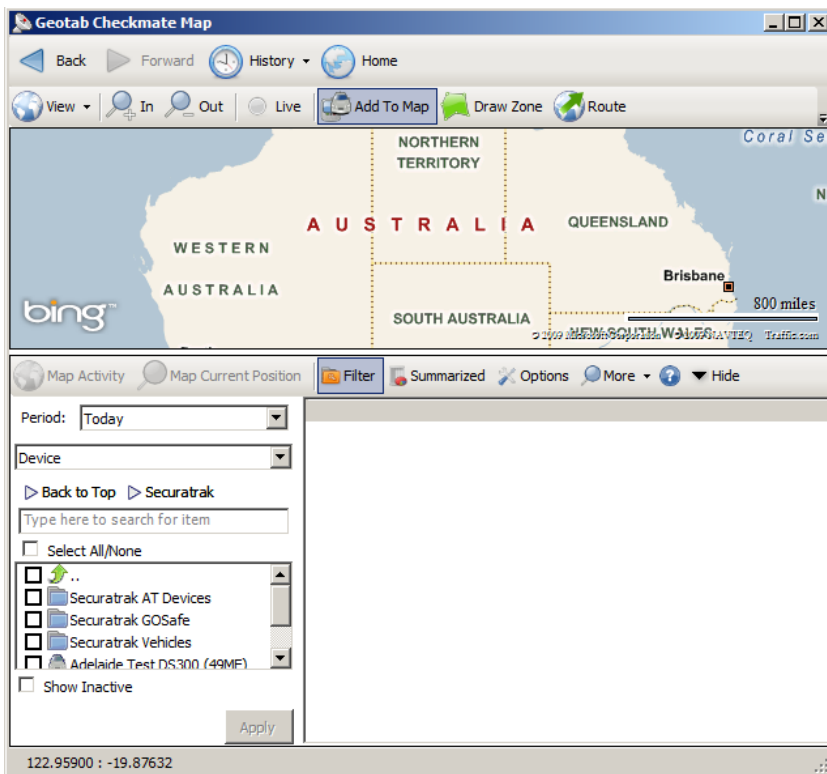


## Tracking in Checkmate Map View

- 1) To display the tracking screen select **Show Map**.

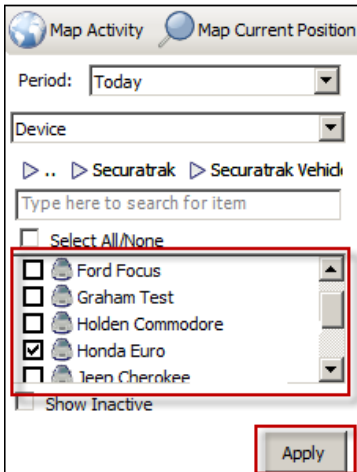


- 2) The following screen will open and be displayed.



3) Use the following field selections to create your device search criteria options:

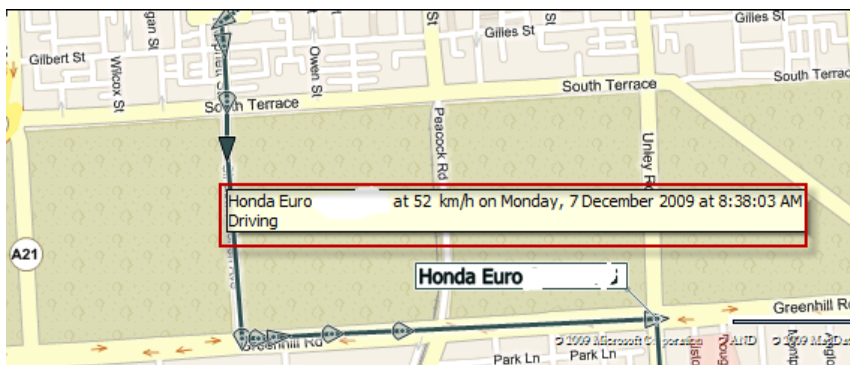
- Period: The date period you would like to map Period:
- Device/Driver: Search for a vehicle or Driver Device
- Type here to search by device or driver name
- Select All/None : Use to select or Deselect all  Select All/None
- Vehicle Window: Place checkbox next to the vehicle/s you would like to show on Map then click Apply.



4) You will then see the following screen. In this example, the Trips List for Monday 7<sup>th</sup> December, for the Honda Euro is displayed.

Device	Device Group	Departure	Driving	Arrival	Distance	Stopped	Location
<b>Honda Euro S990 ADG: Monday, 7 December 2009</b>							
Honda Euro	Securatrak Vehicles	8:18 AM	30m	8:49 AM	12	5h 34m	Securatrak Adelaide:
Honda Euro	Securatrak Vehicles	2:23 PM	1m	2:25 PM	0	22m	Princes Road, TORRE
Honda Euro	Securatrak Vehicles	2:47 PM	3m	2:51 PM	1	5h 56m	Securatrak Adelaide:

5) To map the trip for the highlighted entry (shown above), select **Map Activity**, and a map view will be displayed showing the route taken (as shown below). Using your mouse, hover over one of the Event Points to display a popup, showing detailed information of the trip at a specific point in time. Example: Vehicle & Driver Name, speed, date and time.



6) To check the current or last known position of a vehicle or driver, select **Map Current Position**. If you hover over the Event Point as previously shown, detailed information will again be displayed.

